

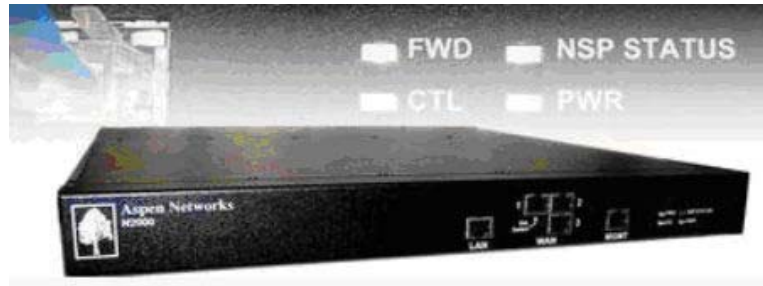
Aspen Networks DATA SHEET

N500/N2000 – Purpose Built RAIL Controllers for the Enterprise



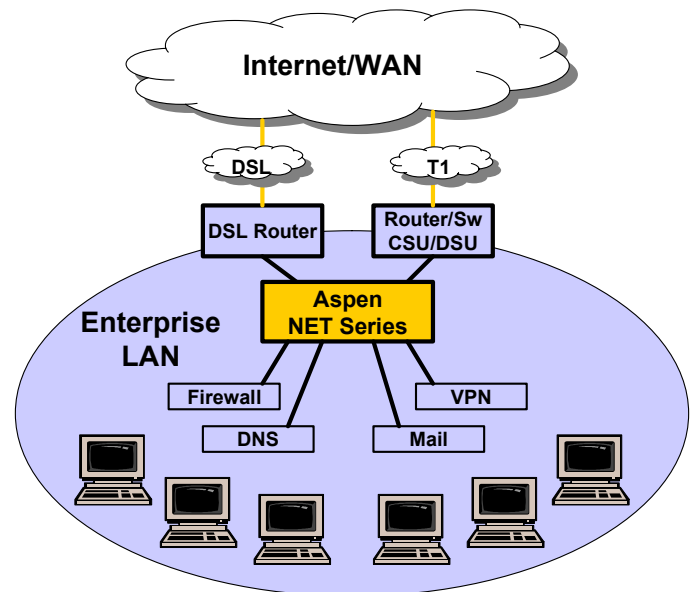
Key Benefits

- ◆ Ensures Business Continuity, availability of critical applications (VPN, DNS, Mail, Web, VoIP FTP, SQL etc...)
- ◆ Application traffic flows are intelligently load shared over all available ISP links
- ◆ Access Technology Agnostic – T1/T3, Ethernet, xDSL, Cable, Last Mile Wireless etc...
- ◆ Manages multiple Internet Service Providers without cost & complexity of BGP – enabling low cost bandwidth such as DSL to be intelligently integrated into the Enterprise RAIL architecture
- ◆ Policy based Traffic Management allows network usage to mirror Business Objects
- ◆ Architected as a Layer 2 – Layer 7 switch ensures risk-free installation & transparent operation
- ◆ Exceptional ROI measured in months



Aspen Networks delivers purpose-built RAIL Controllers that enable enterprises to achieve non-stop Wide Area and Internet operation, while significantly reducing IT expenditures on bandwidth and eliminating the historical dependence on a single Internet service provider (ISP). Aspen Networks is enabling the New Branch Network utilizing RAIL. RAIL = Redundant Array of Internet Links; at each and every enterprise location, multiple links from different Internet Service providers can be used to increase reliability and speed.

The multi homed ISPs can be a mix of T1, DSL, Wireless, Metro Ethernet or any technology type terminated in a customer router. The Net Series continuously selects the best possible ISP paths at any given time (on a per application basis) by taking precise measurements of available bit rate, packet jitter and other ISP metrics affecting network applications. Enterprises can set policies to manage their inbound and outbound traffic while ensuring that critical applications (Web, VPN, DNS, Mail, VoIP etc.) are always available and running. Residing within the enterprise DMZ, the NET Series provides aggregated bandwidth and application-aware traffic management capabilities in a low footprint, efficient form-factor device.



Aspen Networks DATA SHEET

N500/N2000 – Purpose Built RAIL Controllers for the Enterprise



System Specifications	Model N500/N2000
System	Dual RISC Packet Processors interconnected by internal 28 GBPS Switch Fabric
Architecture	Transparent Layer 2 Switch with Application layer (Layer 7) Forwarding
Performance	Throughput 200 Mbps WAN-to-LAN; 200 Mbps Layer 2 filtering per port
Network Interfaces	One 10/100 Mbps LAN Port, Three 10/100 Mbps WAN Ports
Management Interfaces	One RS-232 Port with DB-9 Male Connector, One Secure 10/100 Mbps Mgmt. Port
Watchdog Timer	Built in Hardware Watchdog Timer
Packet Time Stamps	Hardware based, 2 nanosecond accuracy
Operating System	Aspen MOS™ -Microflow Operating System with custom ROM monitor
Enclosure	
19" Rack-mountable	Streamlined 1U Design with LED Panel Displaying Operations
Power	AC power 85-265V, 47-63Hz; 15 Watts; Single power supply, Dual Fans
Dimensions & Weight	1.75" (Height), 16.75" (Width), 18.0" (Depth), 15 lbs (6.81 Kg)
Operating Environment	
Temperature	0°C to 50°C (32°F to 122°F)
Humidity & Altitude	Less than 100% relative humidity, non-condensing. Up to 8000 ft. (2438 M)
Compliance	
Emissions	FCC Class B
Support	Standard warranty: 1-year hardware and 90-day software and technical support

Key Features	Model N500 (Remote Offices)	Model N2000 (Headquarters)
Outbound session protect	Yes	Yes
Site to site VPN protect	Yes (Network requires at least 1 N2000)	Yes
Inbound session protect	No	Yes
DMZ Server Protect	No	Yes
Multiple Firewall Protect	No	Yes
VoIP Traffic Prioritization	Yes (Network requires at least 1 N2000)	Yes
Dual Box Redundancy	No	Yes (N2000-CM package)
Aspen Beacon™ Service Measurements	Yes	Yes
Application Monitoring Service	No	Yes
Network Management	SSH, SCP, Telnet, CLI	SSH, SCP, Telnet, CLI
Wire, Basic and Advanced Modes	Yes	Yes
Trusted LAN Management Port	Yes	Yes, physically isolated

Aspen Networks, Inc.
 3777 Stevens Creek Blvd., Suite 330,
 Santa Clara, CA 95051, 408-246-4059
www.aspen-networks.com